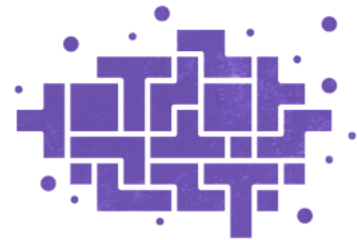


the challenge of
role identity interaction
(in self-presentation)
on social networking sites

Velta Skolmeistere, PhD student, Communication sciences
University of Latvia; velta.sk@gmail.com



FLPP
FUNDAMENTAL AND
APPLIED RESEARCH
PROJECTS

LZP projekts „Latvijas mediju ekoloģija:
Ceturtais industriālās revolūcijas izraisīto
pārmaiņu analīze” Nr. lzp-2018/2-0260

How come it is a challenge?

real person --> digital person / identity

The
facebook
version of you



The
Realistic
version of you



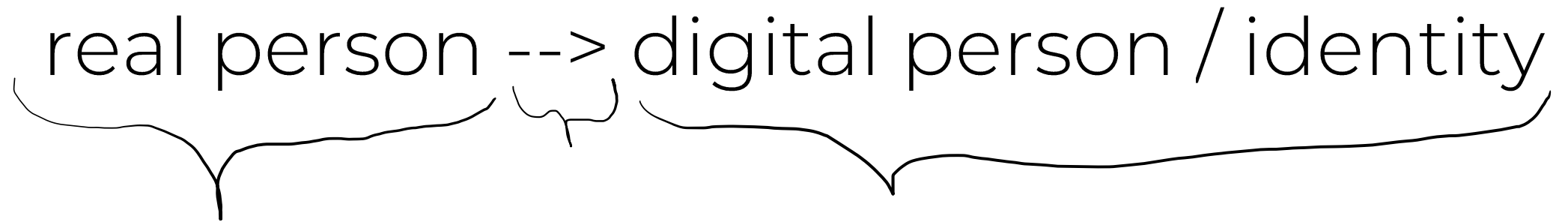
The
facebook
version of you



The
Realistic
version of you



real person --> digital person / identity

A hand-drawn diagram illustrating the relationship between a real person and their digital identity. The text "real person" is on the left, followed by a double-lined arrow pointing to the right, and then "digital person / identity" on the right. A curly brace is drawn under "real person", another curly brace is drawn under the arrow, and a larger curly brace is drawn under "digital person / identity".

real person --> digital person / identity

The image contains three yellow question marks. One is positioned above the words 'real person', another is above the double arrow '-->', and the third is above the words 'digital person / identity'. The text 'real person' and 'digital person / identity' are each underlined with a hand-drawn black bracket.

«The real person» - the self in real life

Self as an object that is derived from social interaction,
where one is defined to herself and points to herself.
(*Blumer*)

One self, yet quite a few identities, based on roles,
affiliations, characteristics (*McConnell, Burke & Stets*)



Identity theory

P.J. Burke & J. E. Stets

During their lives, individuals take on different identities. Furthermore, they have various identities available at any moment.

Multiple self-aspects

A. R. McConnell

Self is a whole created by context-dependent self-aspects.

+ Self-complexity (P. Linville)

Complexity of self is defined by the number of separate self aspects (roles, relationships, traits or activities) that share no meanings or features.

one person

a student



a friend



a worker



multiple identities



a father



a son

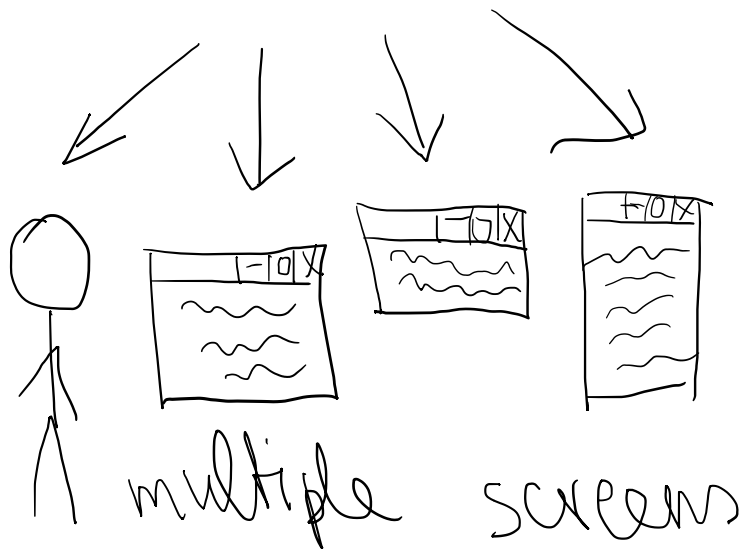


a spouse

The relationship between
real self and digital self

Change of approaches

Turkle, 1995

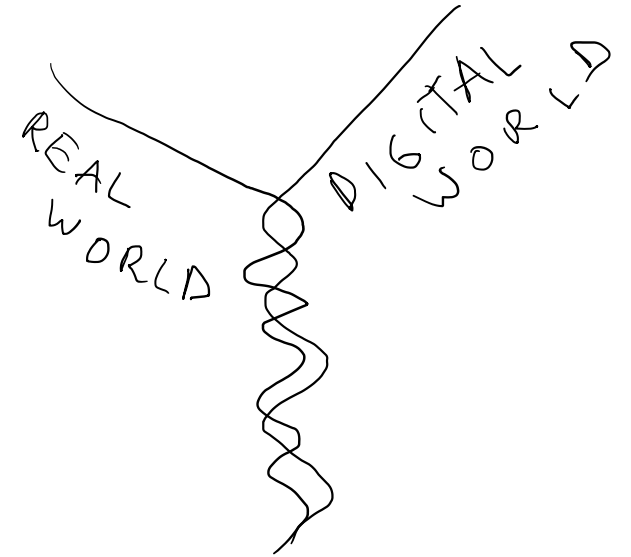


Zarghooni, 2007



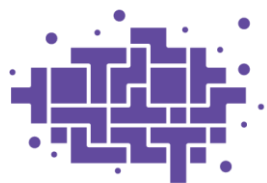
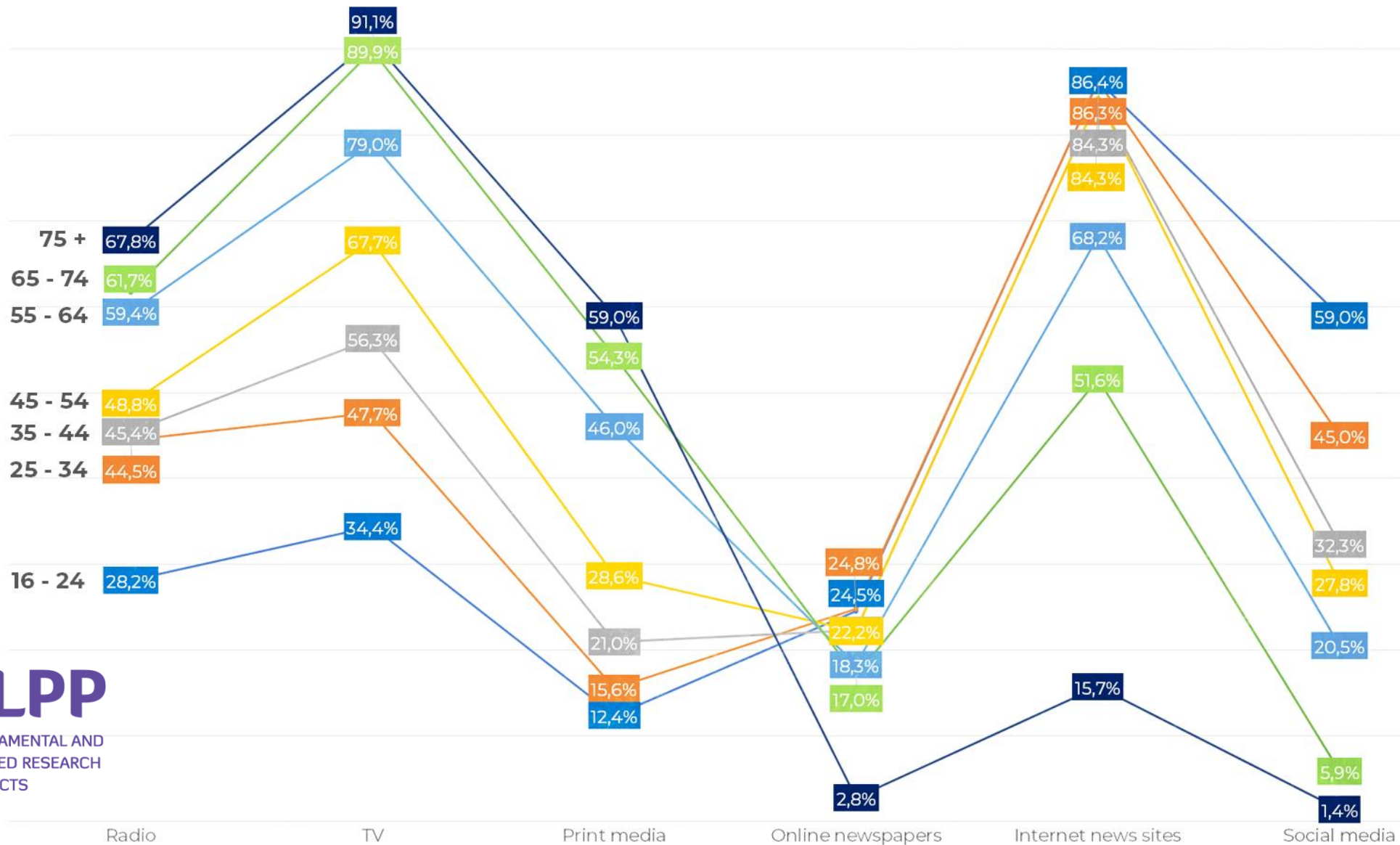
1. 2.

detached
presentation
of self



Marwick,
2013

Where do you acquire the most recent information (about the situation in Latvia and abroad)?

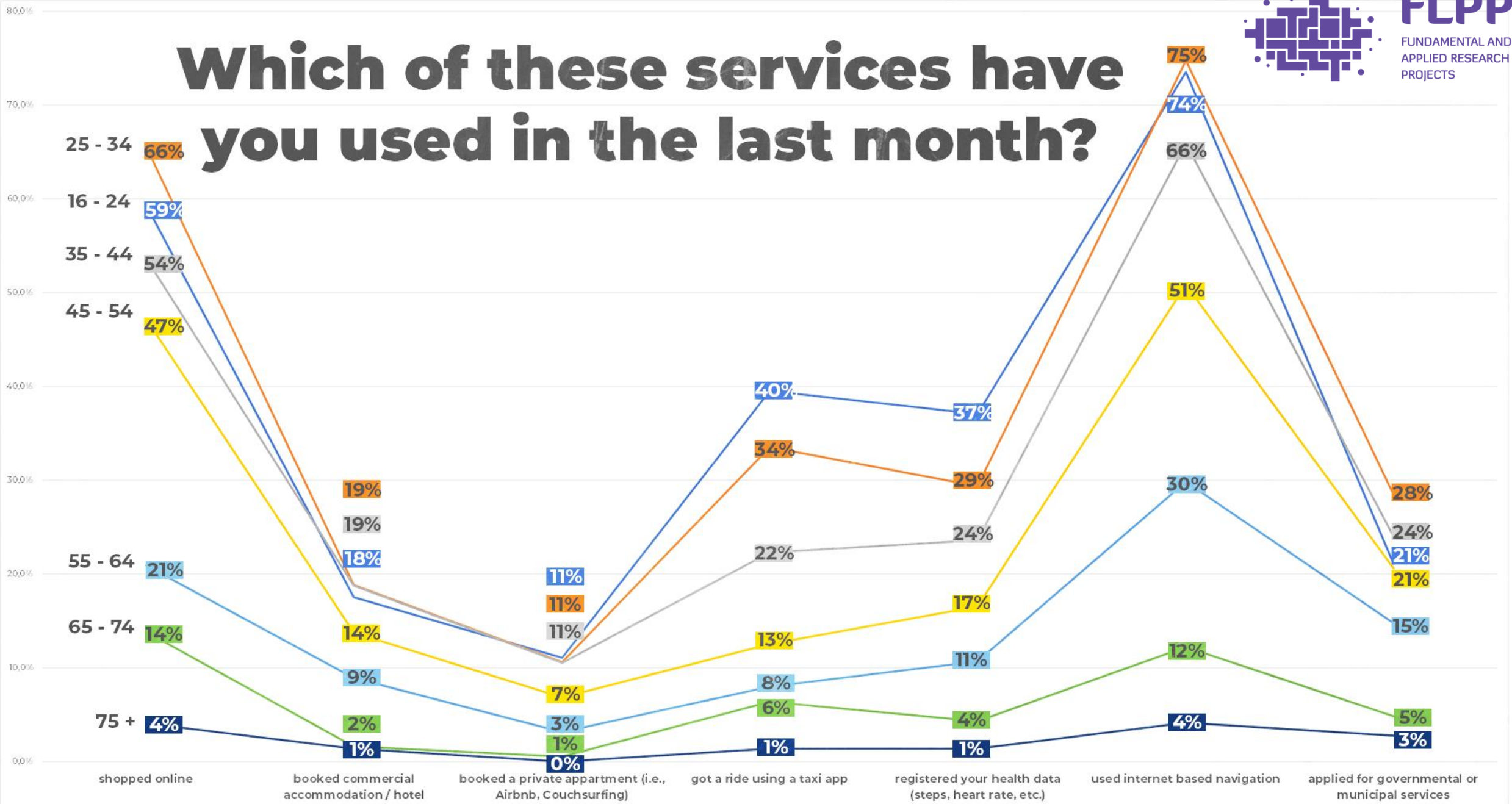


FLPP

FUNDAMENTAL AND
APPLIED RESEARCH
PROJECTS

n=1428

Which of these services have you used in the last month?



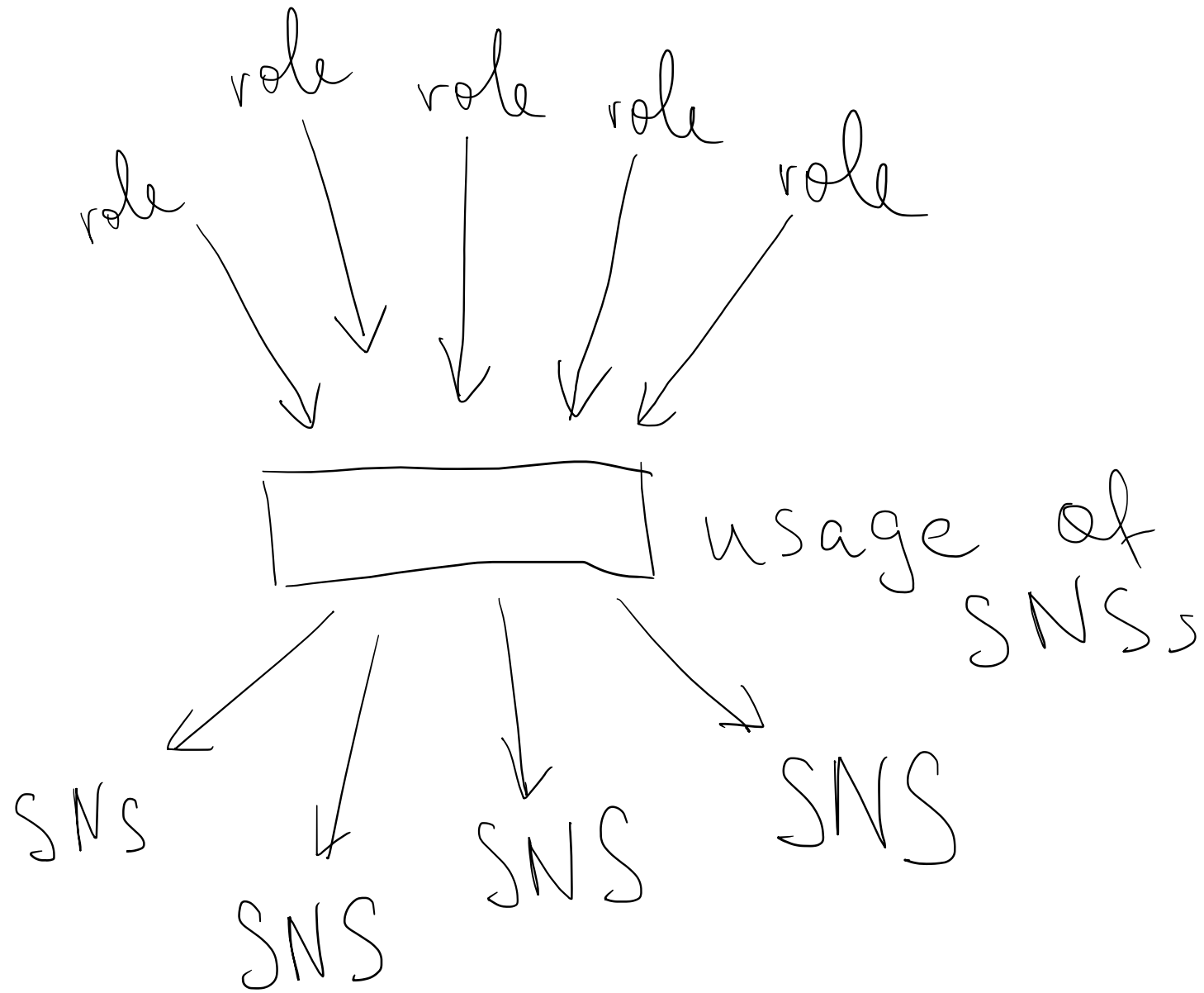
result of self-presentation = digital self

Digital self described (by Zhao, 2005) as

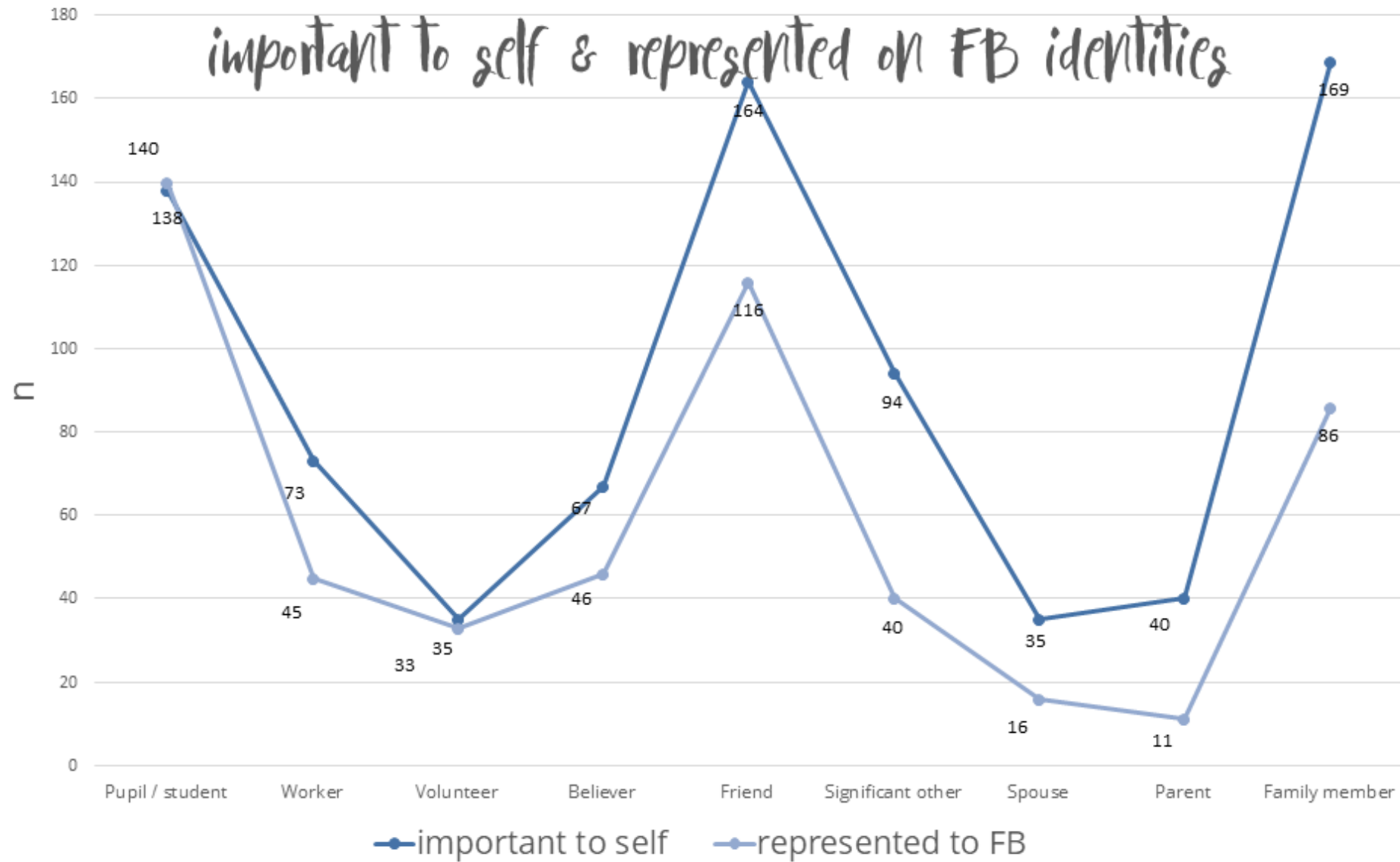
- inwardly oriented;
- narrative in nature;
- retractable;
- **multiplied.**

context collapse

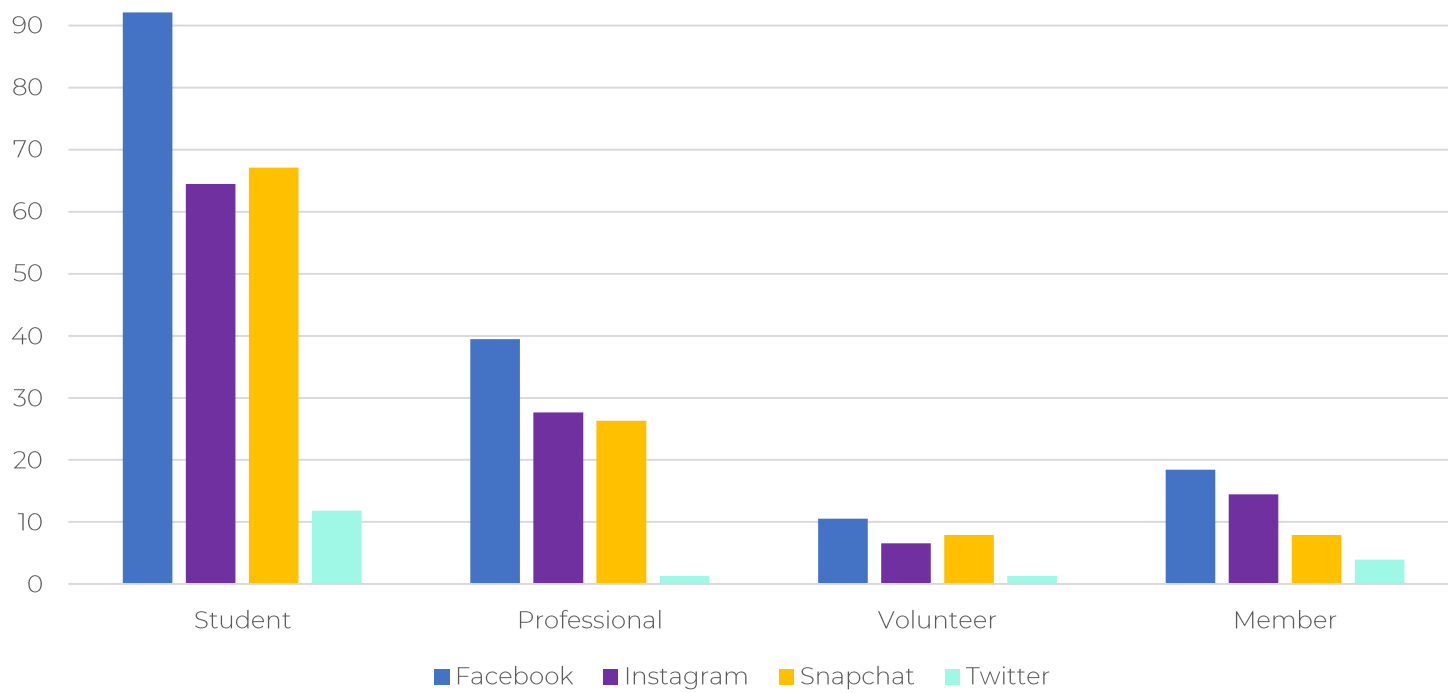
(boyd, 2014)



How is this process managed?



n = 212, data from 2017

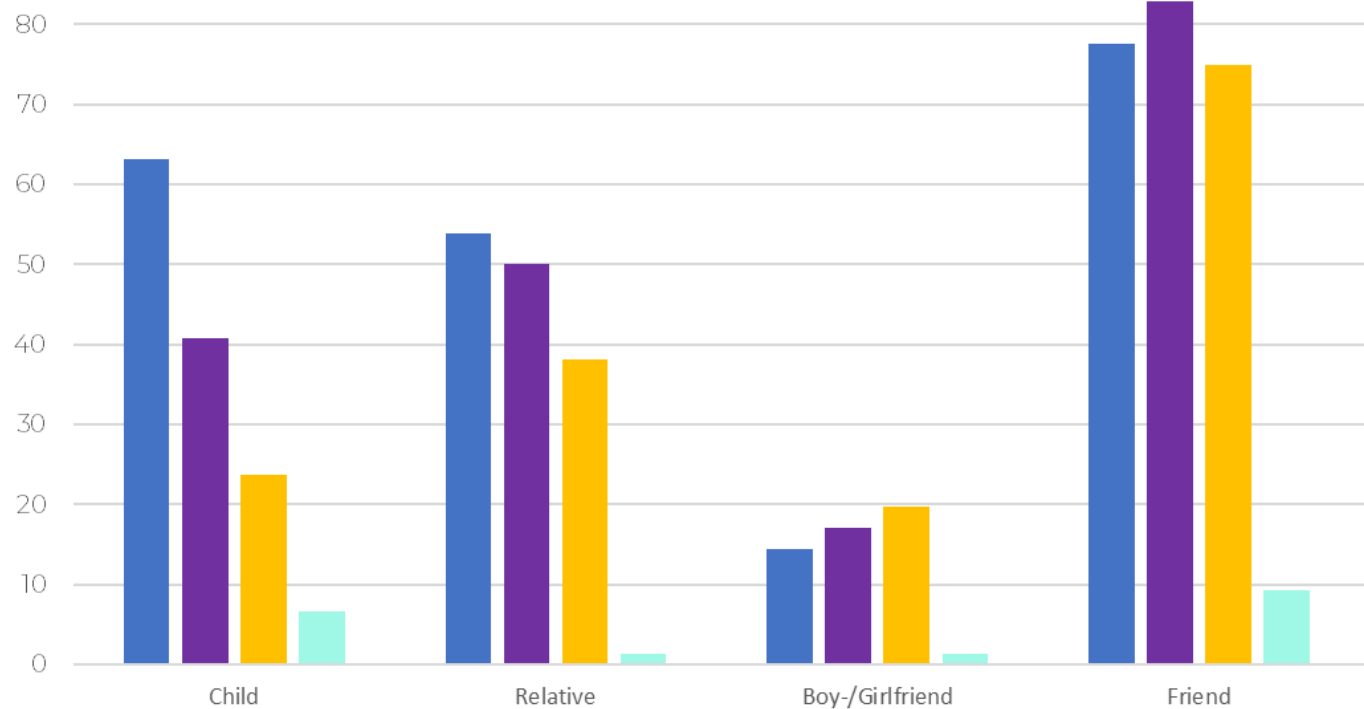


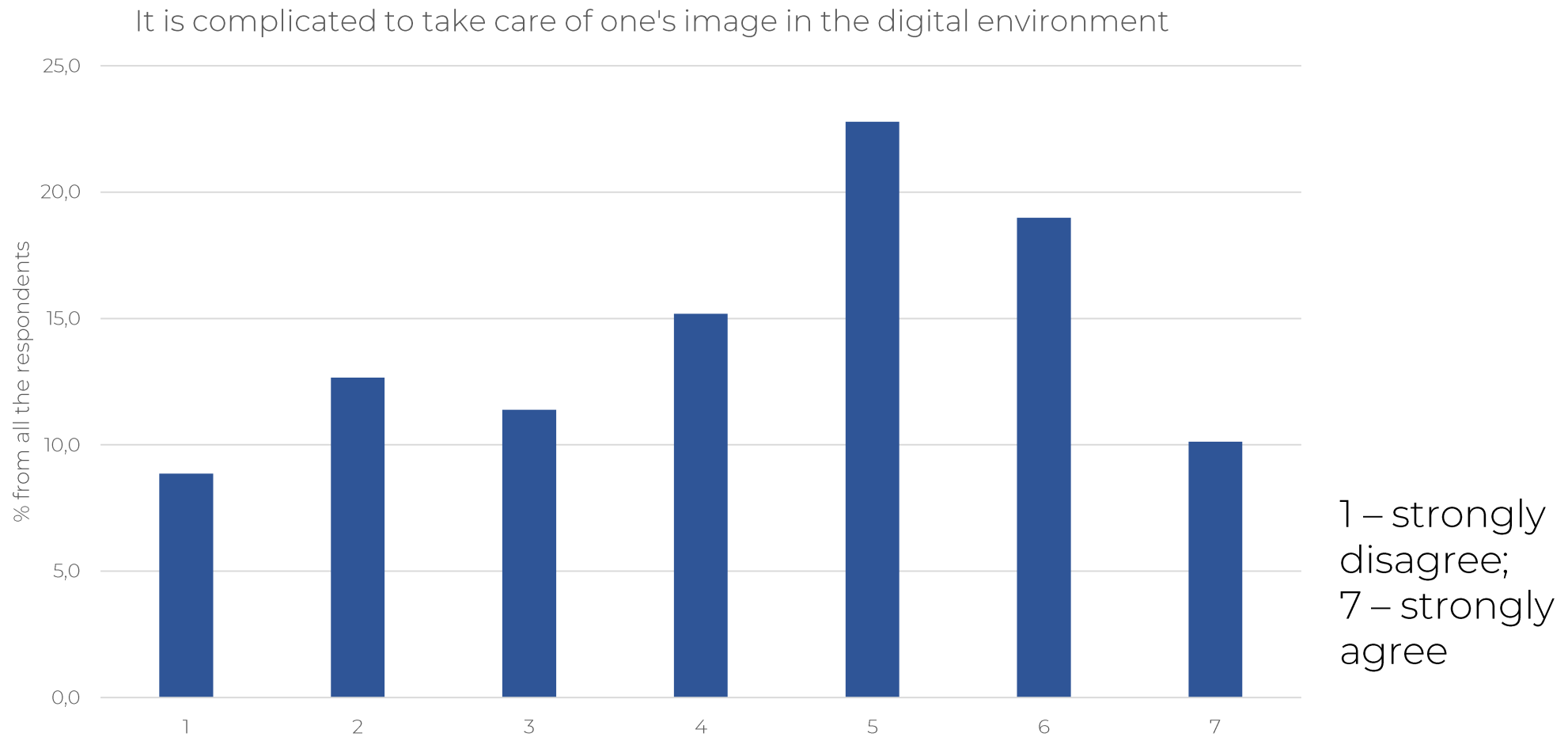
role identities presented on various SNSs*

survey data from 2020, n=76, university students

*TikTok, Youtube, LinkedIn, Vkontakte, Draugiem.lv did not get into the graph

on Y axis - % from all the respondents

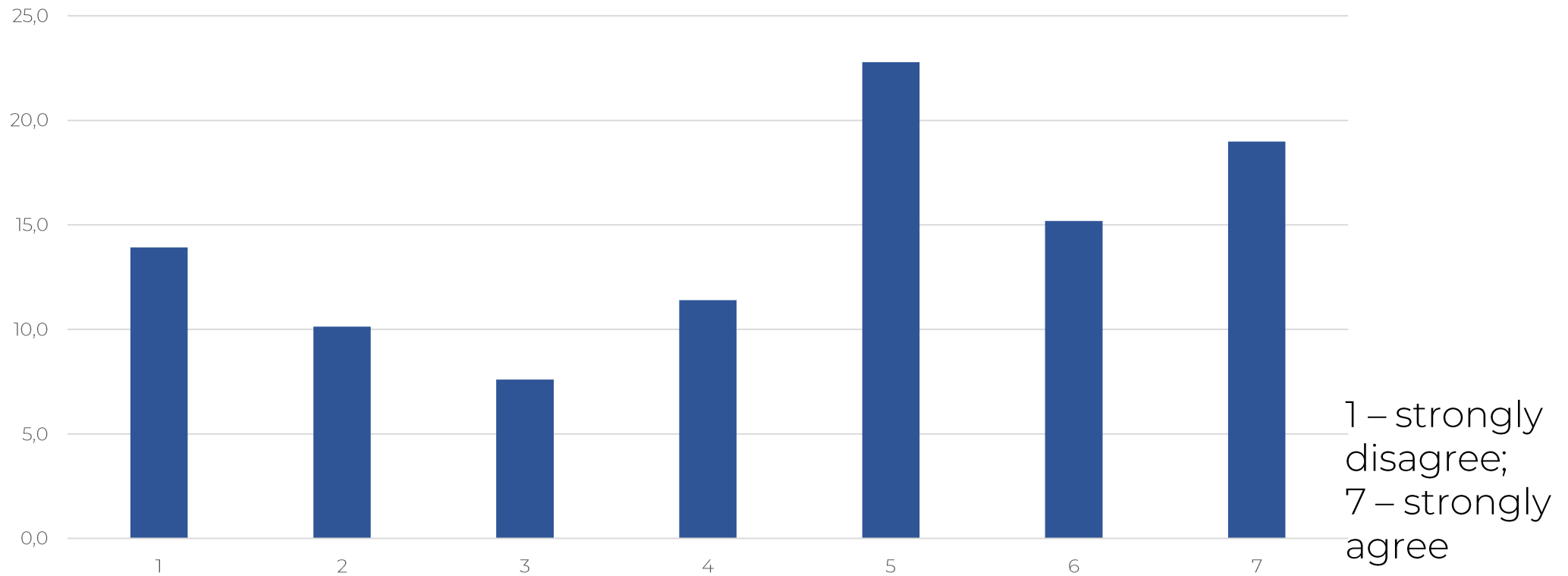




There was a significant colleration between the evaluation of this statement and:

- ** the number of SNSs they used for presenting any of the roles;
- * statement «I tend to wonder what kind of image I make on SNSs»;
- * statement «A role that I possess liminate what I can / want to post on SNSs.»

I act differently on sites where I am not followed by my parents / employers / other authorities.



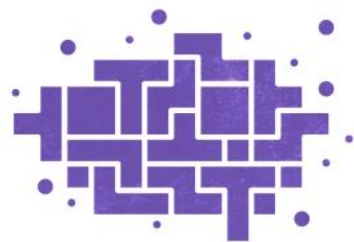
There was a significant correlation between the evaluation of this statement and:

- ** statement «The impression I make on various SNSs differs.»
- ** number of role identities they claimed they possess;
- * the number of SNSs they used for presenting any of the roles.

- More than half of young people perceive taking care of one's digital identity as being complicated;
- Presentation of various roles on various SNSs differs, one of the reasons – being aware of authorities being followers in one or another SNSs;
- The question is complicated both from theory (need to bring together various approaches) and from empirical part (a more individual approach would be needed, as there are various interpretation of roles, their presentation and other questions).

Thank you for your attention!

velta.sk@gmail.com



FLPP
FUNDAMENTAL AND
APPLIED RESEARCH
PROJECTS

LZP projekts „Latvijas mediju ekoloģija:
Ceturtais industriālās revolūcijas izraisīto
pārmaiņu analīze” Nr. lzp-2018/2-0260